

2012 ACCOMPLISHMENTS



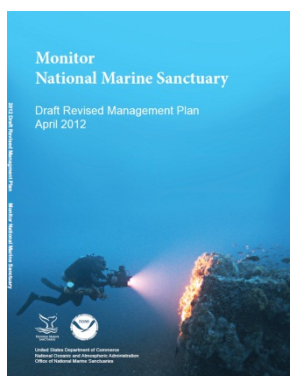
FACES OF UNKNOWN SAILORS UNVEILED

Monitor National Marine Sanctuary (NMS), in collaboration with Louisiana State University's FACES Laboratory, unveiled the reconstructed faces of two USS *Monitor* sailors who died 150 years ago when the vessel sank in a storm off the North Carolina coast. The sailors' remains were discovered in 2002 inside the turret as it was recovered from the *Monitor* shipwreck. With the unveiling of the sailors' faces, and through the work of a genealogist, the sanctuary hopes to identify any living descendants. The event garnered national attention with more than 2,000 nationwide stories.



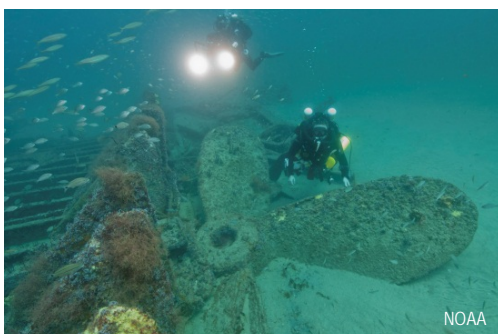
MONUMENT DEDICATED TO USS *MONITOR*

A beautiful memorial monument was dedicated at Hampton National Cemetery in honor of the USS *Monitor* and her crew, commemorating the 150th anniversary of its sinking on December 31, 1862. Nearly 200 guests attended the event, along with representatives from US Navy, US Coast Guard, Department of Veterans Affairs, Joint POW/MIA Accounting Command, NOAA Corps, Office of National Marine Sanctuaries, USS *Monitor* descendants and the family of John Newton, leader of the successful search for the *Monitor*. The monument will attract Civil War enthusiasts and tourists from around the country and beyond, benefiting the local economy.



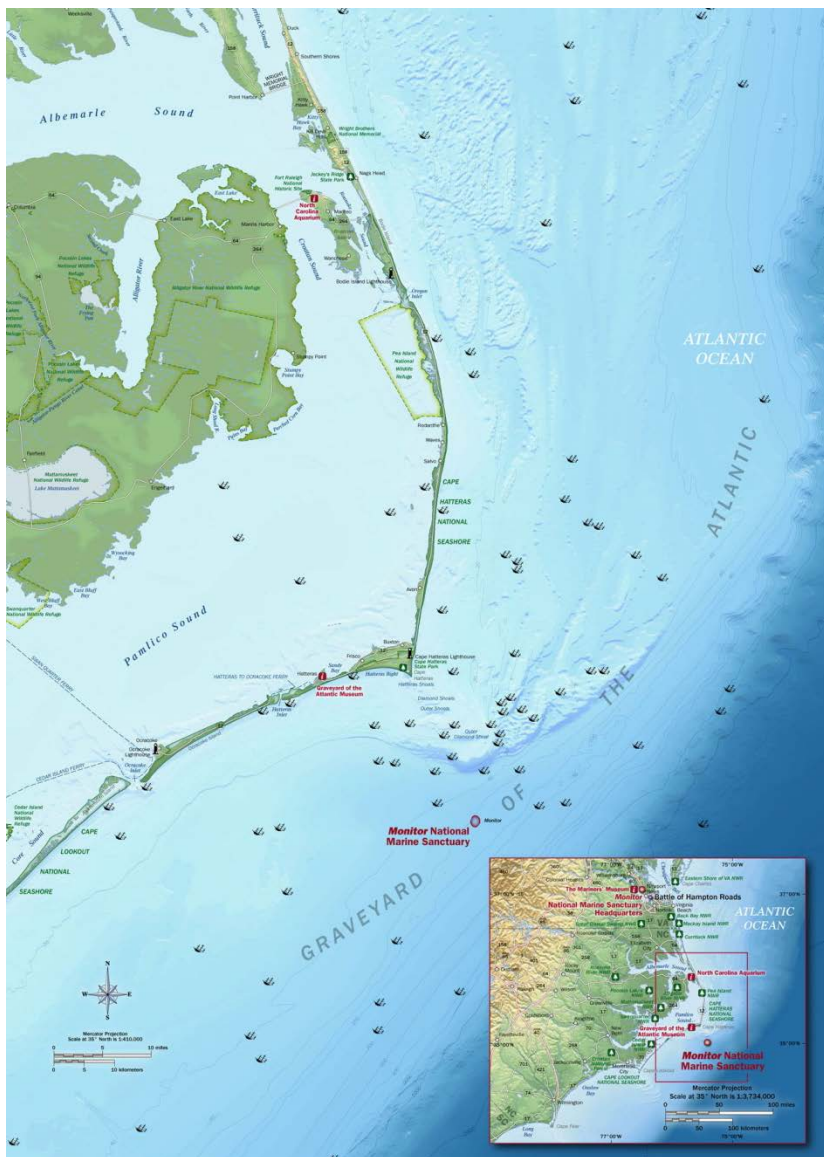
DRAFT MANAGEMENT PLAN RELEASED

A comprehensive draft management plan and environmental assessment for Monitor National Marine Sanctuary was released for public review and comment. The plan, based on several years of scientific assessment and public input, serves as a roadmap for addressing issues facing the sanctuary over the next five years. The draft plan includes proposals to enhance education and outreach, continue restoration and conservation of artifacts, consider possible expansion of the sanctuary's boundaries, and work with the state of North Carolina to strengthen coastal economies through maritime history and Civil War tourism.



MARINE SCIENCE: BATTLE OF THE ATLANTIC

In 2012, Monitor NMS conducted a series of complex maritime archaeological surveys off North Carolina searching for and documenting sites associated with the Battle of the Atlantic in WWII. This project began a systematic survey of 47 potential targets of interest identified in 2011, which may represent new finds. As part of the Battle of the Atlantic survey, Monitor NMS completed high resolution, 3-D multibeam surveys of two WWII wreck sites off Cape Lookout, N.C. In addition to remote sensing, divers conducted in-water assessments documenting eight known wreck sites.



LOOKING AHEAD

- The final Management Plan will be released in 2013 to chart a new course for the sanctuary over the next five years. With the release of the plan, a Draft Environment Impact Statement will begin.
- In 2013, Monitor National Marine Sanctuary hopes to culminate the 150th anniversary of the USS *Monitor* with the burial of two unknown sailors recovered from the turret in 2002. The interment would take place at Arlington National Cemetery.
- Another field season of documenting and preserving the rich maritime heritage of coastal North Carolina waters will begin with the 2013 summer.

Monitor National Marine Sanctuary was designated the nation's first national marine sanctuary in 1975. The site protects the wreck of the famed Civil War ironclad USS *Monitor* off Cape Hatteras, N.C., best known for its battle in 1862 with the Confederate ironclad CSS *Virginia* at Hampton Roads. In partnership with The Mariners' Museum in Newport News, Va., the sanctuary is working to conserve over 1,500 artifacts recovered from the famous shipwreck and works to preserve, study and educate the public about this iconic piece of our nation's maritime past. Established January 30, 1975.

NOAA's Office of National Marine Sanctuaries is committed to supporting lives and livelihoods across the nation and in sanctuary communities through socioeconomic research and monitoring to understand the economic and social drivers of sanctuary resources and improve management practices.

NATIONAL MARINE SANCTUARY SYSTEM

Olympic Coast
Cordell Bank
Gulf of the Farallones
Papahānaumokuākea
Hawaiian Islands Humpback Whale
Monterey Bay
Channel Islands
American Samoa (U.S.)

Thunder Bay
Stellwagen Bank
Monitor
Gray's Reef
Florida Keys
Flower Garden Banks

○ National Marine Sanctuary
 ▲ Marine National Monument
 Scale varies in this perspective. Adapted from National Geographic Maps.

The Office of National Marine Sanctuaries serves as the trustee for a system of 14 marine protected areas encompassing more than 150,000 square miles of marine and Great Lakes waters from Washington state to the Florida Keys, and from Lake Huron to American Samoa. The system includes 13 national marine sanctuaries and the Papahānaumokuākea Marine National Monument. For more information on the National Marine Sanctuary System, visit: <http://sanctuaries.noaa.gov>